

# Call for submissions: An edited volume

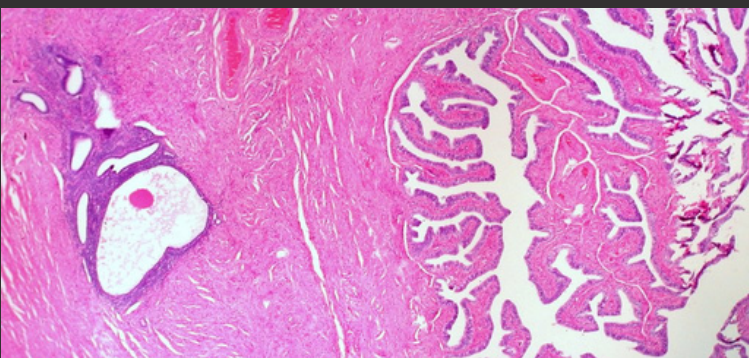


Image: Endometriosis in Wall of Fallopian Tube, photograph by Ed Uthman. Used with permission from the creator and under CC by 2.0

## Reframing Endometriosis: Power, Politics and Potential Futures

**Editors:** Dr Annalise Weckesser, Dr Andrea Ford, and Dr Vèronique Griffith

**Abstract deadline:** February 29th, 2024

\*Please circulate widely\*

Building on the success of the British Academy conference, '[Reframing Endometriosis: Power, Politics and Potential Futures](#),' we are excited to announce this invitation for chapter proposal submissions for an edited volume.

*NB: A separate (related) proposed special issue in a medical journal announcement is forthcoming.*

**Background:** Endometriosis is a common yet poorly understood condition. In recent years, failures in diagnosis and treatment are increasingly highlighted in media and academic discourse as emblematic of gender biases in health and medical research. The reemerging field of critical menstruation studies also revitalised scholarly interest in the condition. This timely edited volume will be the first to bring together social science and humanities perspectives, alongside and in conversation with, (bio)medical and patient advocate perspectives, on endometriosis. It will focus on practices of exclusion in past and present approaches to endometriosis, as well as potential inclusive futures to address the ongoing inertia around care improvement.

**The way endometriosis is framed is central to how it is understood, experienced, and treated.** (Re)shaping endometriosis categorisation is inevitably a political endeavour. Endometriosis has long been categorised as a gynaecological (pelvic) condition and a 'women's disease.' Recent biomedical research, however, now defines endometriosis as a systemic condition affecting the whole body, like rheumatoid arthritis or multiple sclerosis. In tracing shifting historical and contemporary understandings of endometriosis, this volume aims to **focus on the politics and practices of exclusion and inclusion embedded in the (re)making of disease categories.**

Medical discourse continues to construct those with endometriosis as reproductive bodies with hysterical traits, with patients often described as 'difficult.' This echoes patients' experiences of dismissal and being made to feel symptoms are 'all in their head'. **The volume is poised to be relevant outside the specific remit of endometriosis, to other contested disease experiences** including fibromyalgia, chronic fatigue syndrome, 'long COVID,' and more.

**Chapter contributions** might consider (past, present, and/or future) framings of endometriosis and the implications/practices of inclusion and exclusion in relation. *but not limited, to:*

- Historical legacies and persistent myths surrounding endometriosis.
- Experiential, marginalised, and/or intersectional knowledge of endometriosis, chronic illness, disability, and/or other contested diseases.
- Silos within the field (e.g., between biomedical and social sciences, patients & health practitioners, and various care specialists, etc.).
- Extant research with overlooked/excluded patient groups, including those from ethnically and racially minoritized communities, LGBTQ+ and gender diverse communities, young people, those who are postmenopausal, those residing in the global south, and more.
- Socio-cultural-political implications of medical framings of endometriosis as a systemic (i.e. whole body), rather than solely gynaecological, disease.
- 'Patient community' (online) spaces, advocacy and organising.
- Contemporary (inter)national government policy and medical guidelines.
- Possible, inclusive future (theoretical) framings of endometriosis.

**Submission details:** Each final contributing chapter will be approx. 3,000 words in total. **Please send proposed chapter abstracts (approx. 300 words), a brief biography (approx. 200-300 words with links to previous relevant publications if available) to [socialendonet@gmail.com](mailto:socialendonet@gmail.com) or [annalise.weckesser@bcu.ac.uk](mailto:annalise.weckesser@bcu.ac.uk) by February 29th 2024**

To receive the forthcoming separate proposed special issue in a medical journal call, please contact [socialendonet@gmail.com](mailto:socialendonet@gmail.com) or [annalise.weckesser@bcu.ac.uk](mailto:annalise.weckesser@bcu.ac.uk)

**Join, or learn more about the Social SciencEs Endometriosis Network (SEEN) here: [socialsciencesendometriosisnetwork.org](https://socialsciencesendometriosisnetwork.org)**